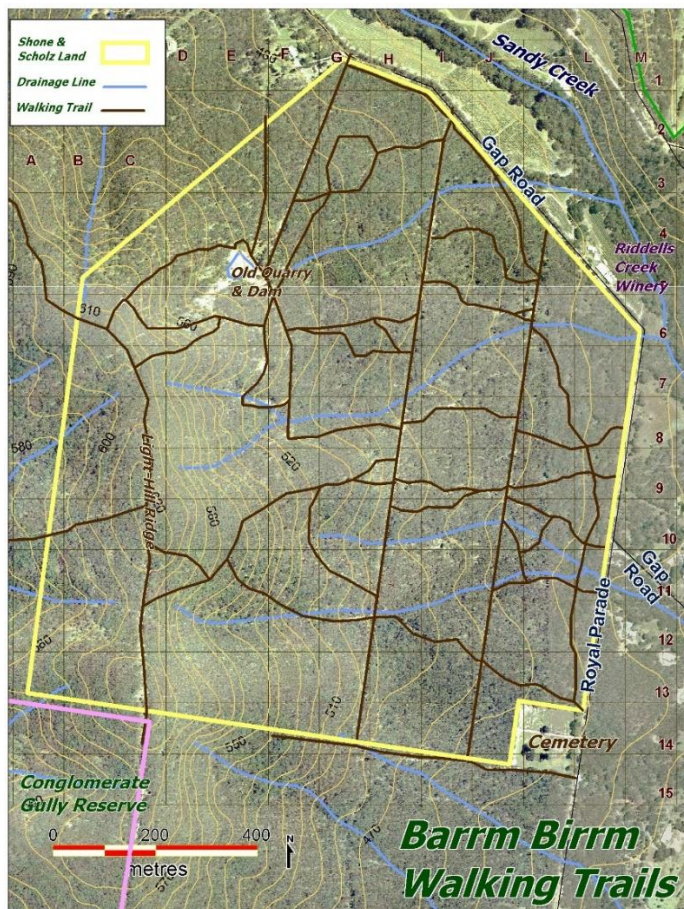


Barrm Birrm

looking after the last wild places



Riddells Creek is a town of around 4000 people an hour north west of Melbourne. The Landcare group formed in 2005 to care for the bushland around Riddells Creek, in particular, 120 hectares 4 kms from the centre of the town. We call it Barrm Birrm, *place of many yam roots*, after the murnong, a plant that was a staple food for the Wurundjeri. Barrm Birrm is the eastern flank of the southernmost spur of the Macedon Range, as it runs down to the plains.



The grassland/woodland ecosystem of Barrm Birrm is in excellent condition. The area was sold as a subdivision of 162 lots in the mid-1970s, but Council zoning prohibited housing construction on account of the highly erodible clay soils. That has stayed in place, and Macedon Range Shire Council now recognises the importance of this bushland.

Riddells Creek Landcare wants to see Barrm Birrm in public ownership, protected forever and managed by the local community for multiple uses.

We have identified and publicised the flora. We clear up rubbish, kill weeds, educate our local community and host visits from community groups, schools and universities. We work with Council to limit 4WDs, trail bikes, rubbish dumping and illegal camping. Barrm Birrm is at a tipping

point. Once it was a long way from the city. Now it is at the edge of a rapidly growing town and a rapidly growing city. What if more people showed up to care for the place?

Overleaf are three projects that where you can make a difference.

The Orchid Team

Join a small group of people in a monthly walk with orchid specialist Andrew Dilley, to find what flowers where. There are 28 orchids on the record for Barrm Birm, but where are they? Are they there this year?

This is a closed member group –we want people who have a strong interest in orchids and are willing to walk Barrm Birm once a month for the next year to discover the orchids. Starts 6th November, speak to Ross Colliver 0411 226 519.



Weed Walking

A monthly walk to get to know the weeds of Barrm Birm and how to get them out. We will do a little weeding on the way. Bluebell creeper, gorse and Spanish heath, Cootamundra Wattle, Ovens Valley Wattle, Sticky Wattle Sallow Wattle and Pittosporum. We have killed off many of these, but new seedlings can be pulled out before they get big, and we will round up the stragglers



If you are a regular walker in Barrm Birm, then learn how to spot the plants that should not be growing in Barrm Birm, and get some practice in getting them out. Weed Walking will use mostly the small tracks of Barrm Birm—the foot tracks and the roo tracks—so you'll get off the beaten track. Last Saturday each month, starts Saturday 29th October, 10-12. Meet outside 288 Gap Road.

Story Walking



Why is Barrm Birm important to you? It might seem obvious that Barrm Birm is a beautiful place worth permanent protection, but not so many people know about the place. Your story can say a lot.

This is for people who already know and love Barrm Birm. We're going low-tech and self-help. Shoot footage in Barrm Birm on our phones, then come straight back to our work room and edit down to a 1-2 minute video. Bring your laptop, with Windows Moviemaker, the basic Mac video editor or whatever you use now. We will cobble together what we each know about shooting and editing a video, and post the results on the RCL website. Contact Ross Colliver, 0411 226 519.

Defining a walking trail



Where do you walk in Barrm Birm? If you're a newcomer, having so many trails is kind of confusing. Compare Barrm Birm to Conglomerate Gully, where there is one trail, on a loop. You start, you finish, you get a feel for most parts of the reserve. Could we define a trail somehow? Could we add in activities that a family could pick up, things that kids could do as they walked?

This project is sitting in the wings waiting for someone to pick it up. It would be fun to do.